

## Complete Transceiver Characterization MultiLane Module Compliance Boards

### Confident and Comprehensive Testing

All MultiLane MCBs are equipped to ensure complete confidence and accuracy for pluggable testing.

- IEEE specification compliance
- Pin headers provide access to power and low-speed signals
- Drive I2C or connect an I2C packet analyzer
- Drive 3.3 V from an external source for power supply margining
- 1 or 2 test traces

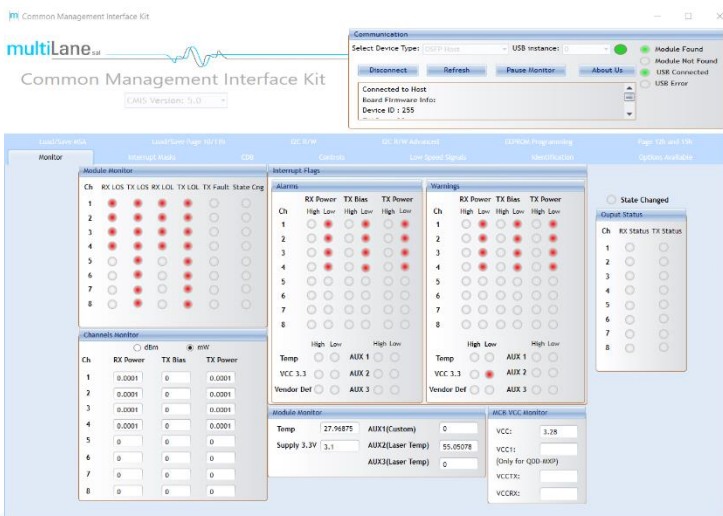


ML4062-MCB-112 – 800G QSFP-DD MCB with RF connectors (also available with SMPS and MXPM70 connectors)

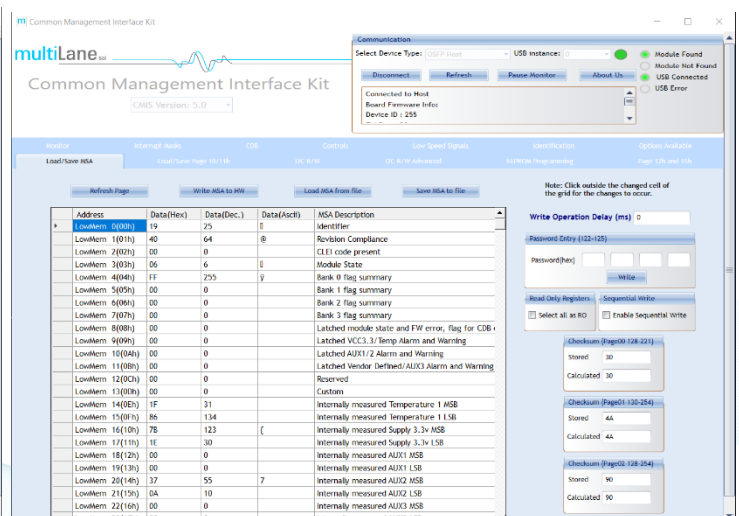
A USB interface on the MCBs gives access to a complete CMIS GUI, providing a comprehensive approach to DUT interoperability, allowing users to access full CMIS implementation in modules:

- Access to module EEPROM
- I2C R/W
- Monitoring interface
- Common Data Block Management support (CDB)
- Access to module controls
- Low speed signal access
- APIs available

CMIS 3.0,4.0,5.0,5.2 supported, depending on the CMIS implementation of the inserted/tested module.



CMIS GUI Monitoring interface: monitor module interrupt flags, as well as RX and TX power, loss of lock and loss of signal. Monitor module temperature, voltage supply and current.

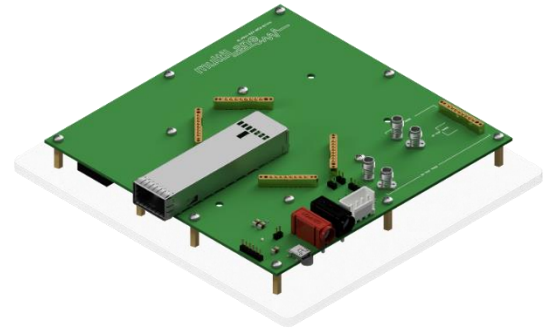


CMIS GUI access to module EEPROM: Access complete module memory with address description and content details. Read from or write to module memory.

## Form Factors for Every Application

MultiLane has a comprehensive portfolio of MCBs in every major form factor in the industry, with data rates from 10G to 1.6T, including:

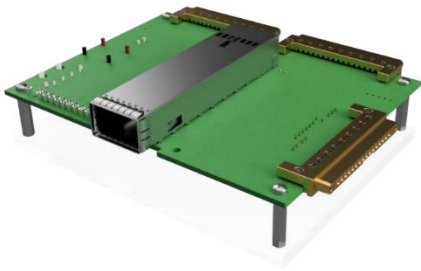
- CFP, CFP2-ACO/DCO, CFP4, CFP8
- SFP28/56/112, SFP-DD56/112, DSFP
- QSFP28/56/112
- QSFP-DD, QDD800
- OSFP, OSFP800, OSFP1.6T
- OSFP-XD



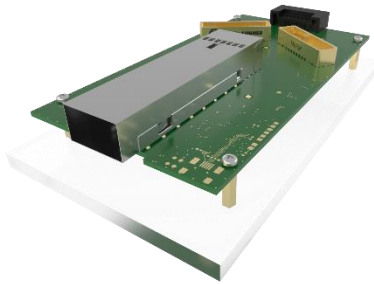
*ML4064-MCB-224 – 224Gbps/lane OSFP MCB with SMPS connectors (also available with RF and MXPM70 connectors)*

## MCB Connectors: One Size Does Not Fit All

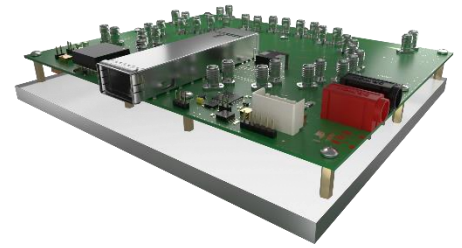
Catering to a wide variety of use cases, MultiLane offers our most advanced MCBs with a selection of RF, SMPS, and MXPM70 connectors.



*ML4064-MCB-112-SMPS-E*



*ML4064-MCB-112-MXPM70*



*ML4064-MCB-112*